



CHOICE-Dr. install manual

for 32bit OS

V1.53

2011. December

Contents

I. Install debugger package	3
II. Install USB driver	9
III. Install LPT driver	15

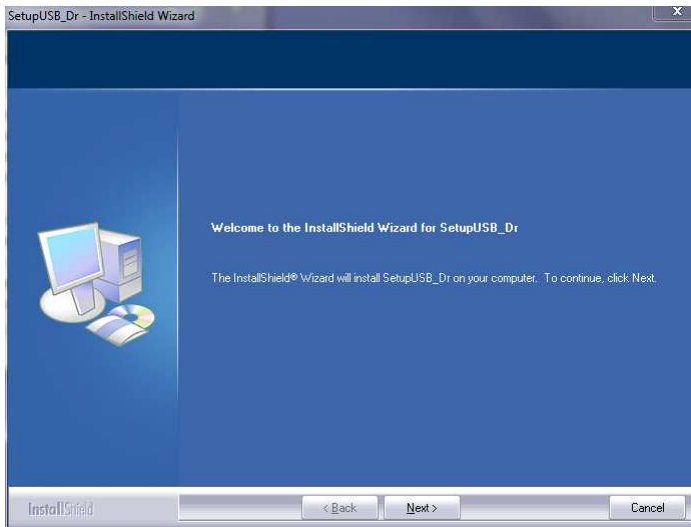
I. Install debugger package

You have to setup application software first. Because of the device driver program is copied during application software installation.

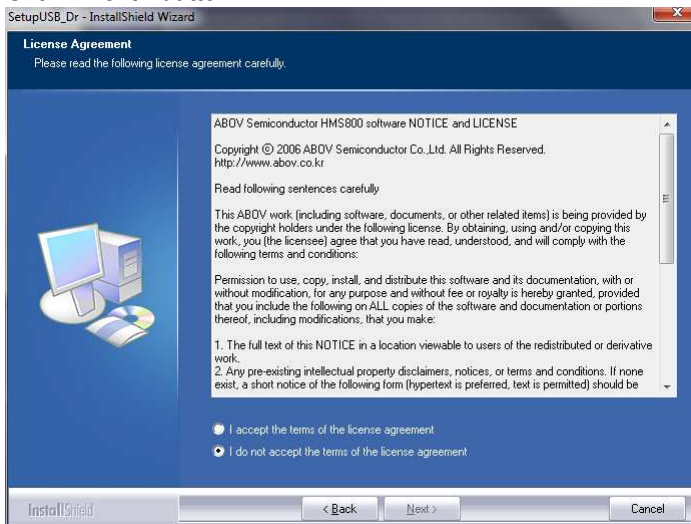
Do not plug in the CHOICE-Dr. emulator hardware to your PC yet.

Please download executable single setup program from our website (<http://www.abov.co.kr/>). You have to keep this installing sequence.

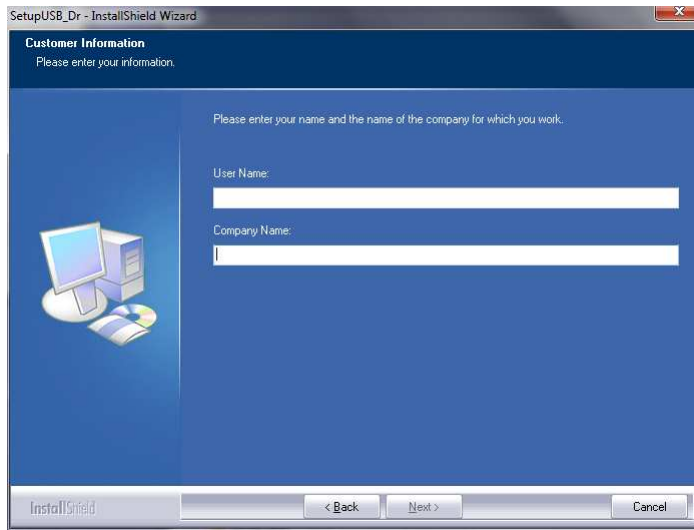
- If you execute debugger package setup program, you can see following dialog. Click “Next” button.



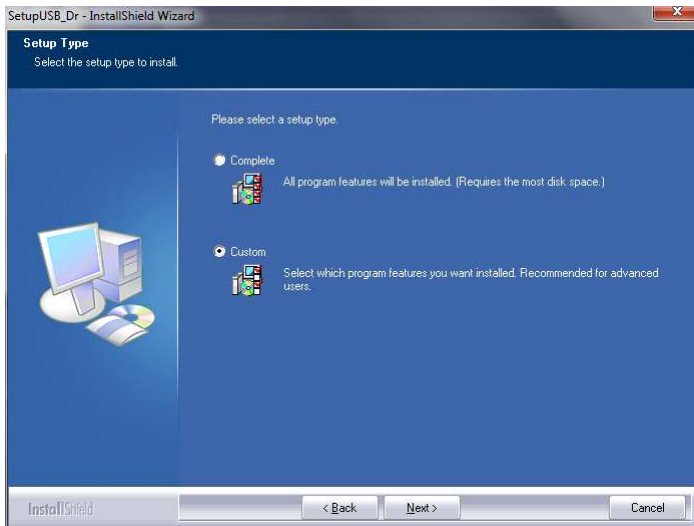
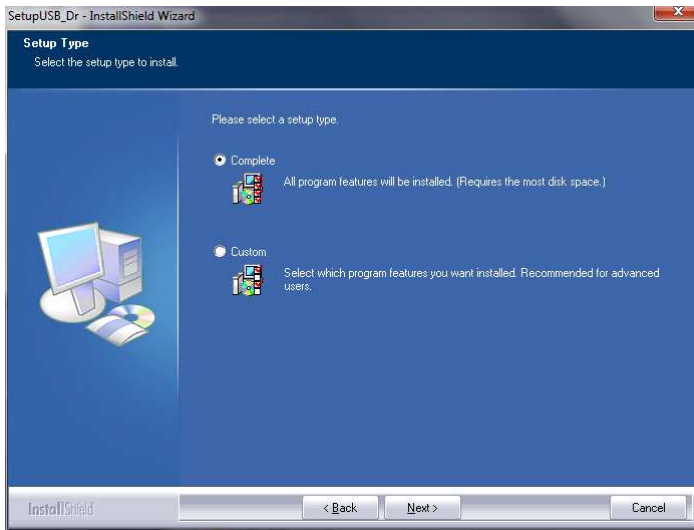
- Dialog-box asks license agreement. Select “I accept the terms of the license agreement”. Click “Next” button.



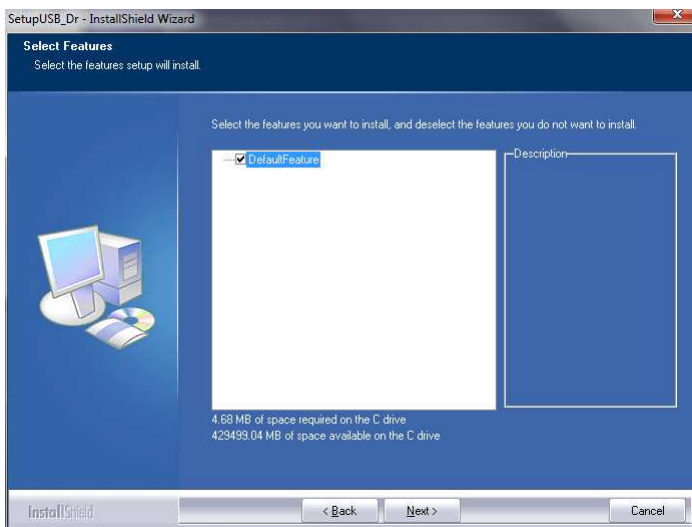
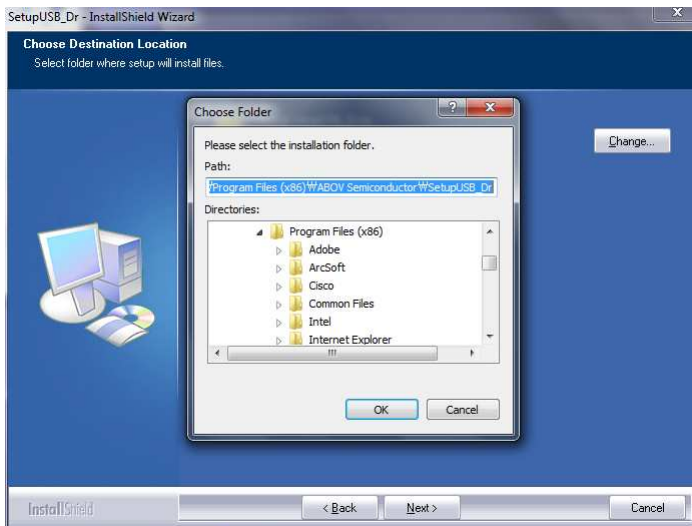
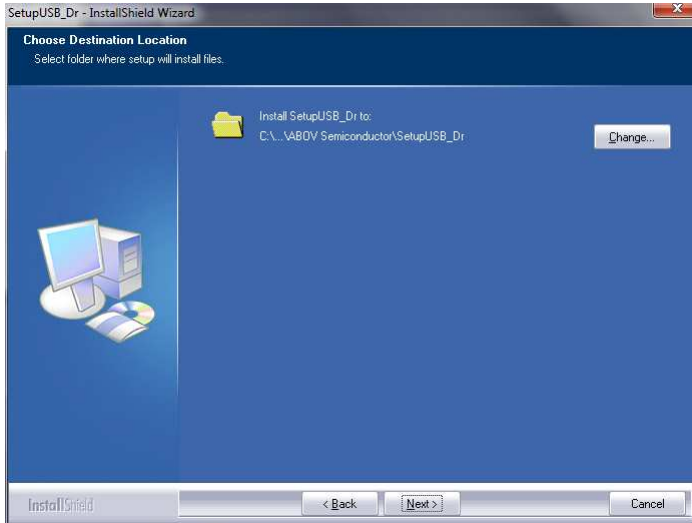
- Dialog-box asks User name and Company name.
Fill the blank lines.
Click “Next” button.



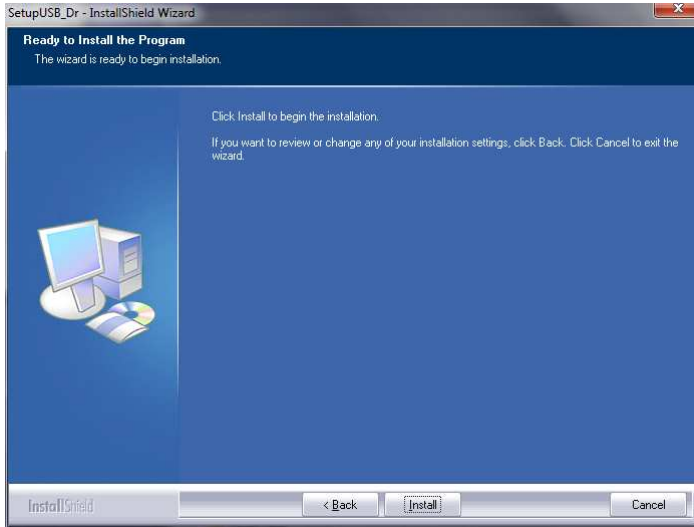
- Dialog-box asks install type.
If you want change target directory, select “Custom”
Or not, select “Complete”.
Click “Next” button.



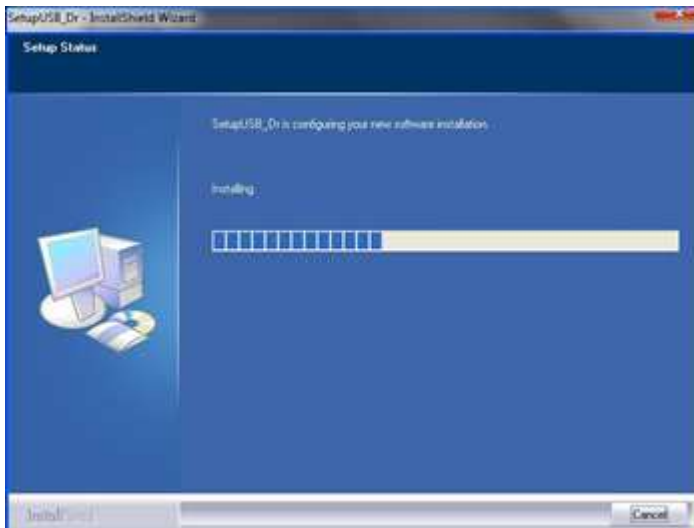
- If you selected Custom, you can change target directory here. Click “Install” button.



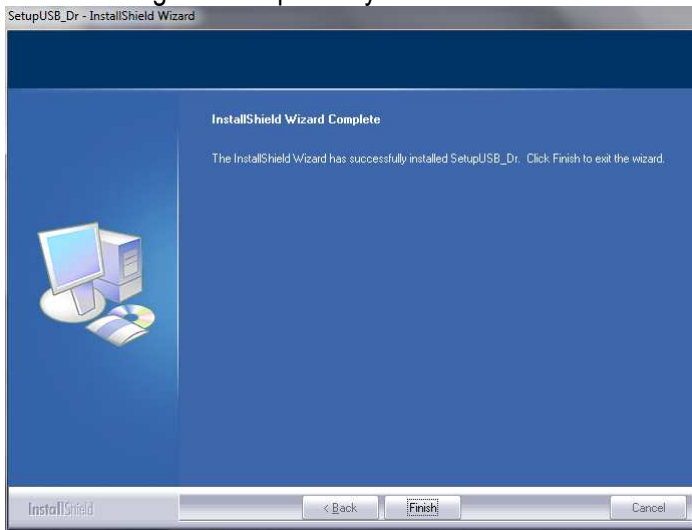
- Dialog-box notify the beginning of the installation.
Click “Install” button.



- Dialog-box display installation processing.
Click wait until it is finished.



- Dialog-box notify the installation is completed.
Click “Finish” button.
PC re-booting is not required by this installation.



- Software installation is finished.
But, you have to install USB driver too. Or not, CHOICE-Dr. emulator can not be work.

II. Install USB driver

Basically CHOICE-Dr. 32bit debugger program requires LPT port for its communication. If you want to communicate via LPT port, you can skip this section.

If you have USB gender which we supplied or you have new CHOICE-Dr. which adopted USB interface, you have to install USB driver.

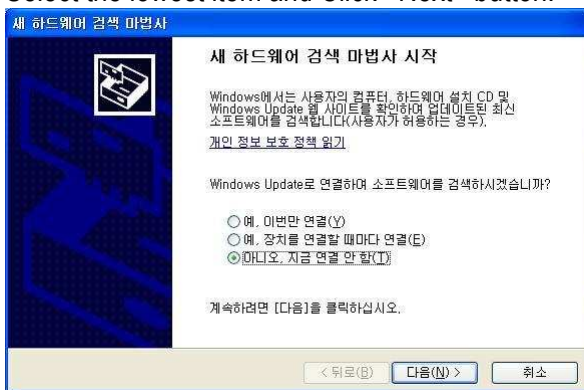
If you did not install the debugger package yet, please install the debugger package before this USB driver installing.

We are using MicroSoft Windows-XP KOREAN version, so some following dialog-box examples are displayed by HANGEUL, but you can understand its meanings.

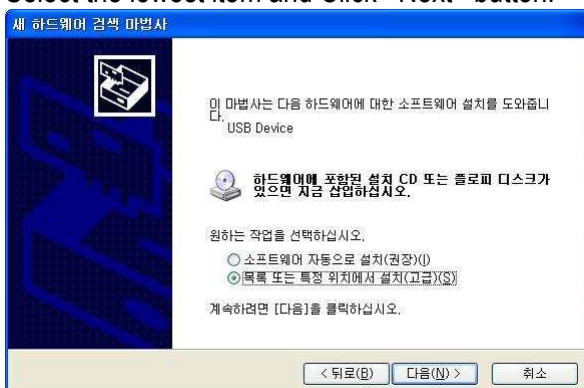
Two USB drivers will be installed.

Second USB driver will be installed as soon as the first USB driver is installed.

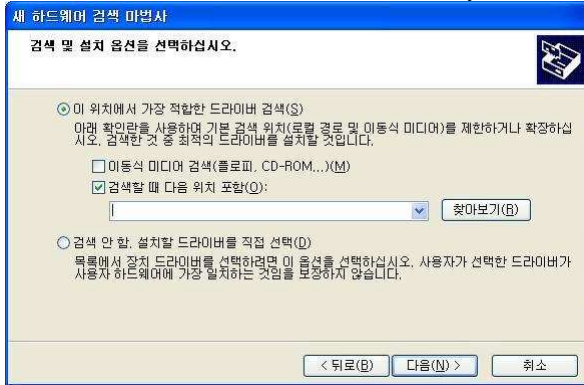
- At the first time, connect the USB gender or new CHOICE-Dr. You can see following dialog-box. Select the lowest item and Click “Next” button.



- Select the lowest item and Click “Next” button.



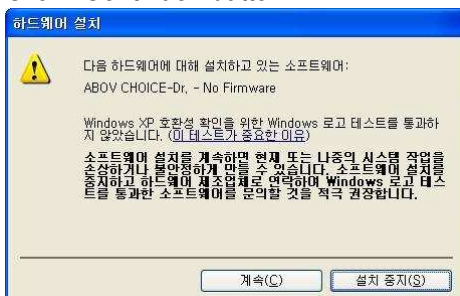
- Check and select as following dialog-box example.
Click “Browse” button to select directory which contains the INF file.



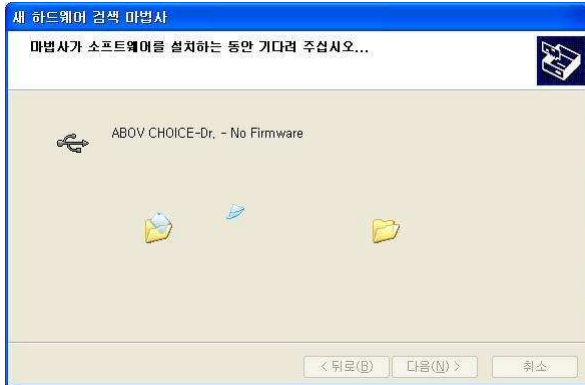
- Select the exact directory where you installed the debugger package.
Directory path is “c:\Program Files\ABOV Semiconductor\SetupUSB_Dr”
Click “Yes” button.



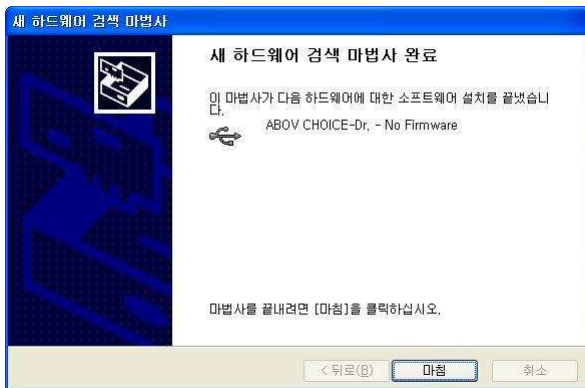
- Microsoft Windows asks whether you setup or not the driver software.
Click “Continue” button.



- Microsoft Windows setup the driver software.
Please wait.



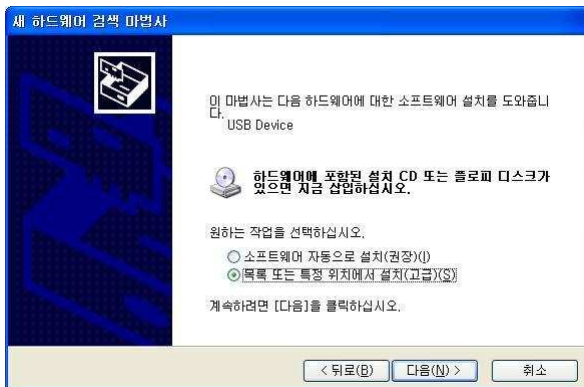
- Dialog-box shows the first USB installation was completed. Click "Finish" button



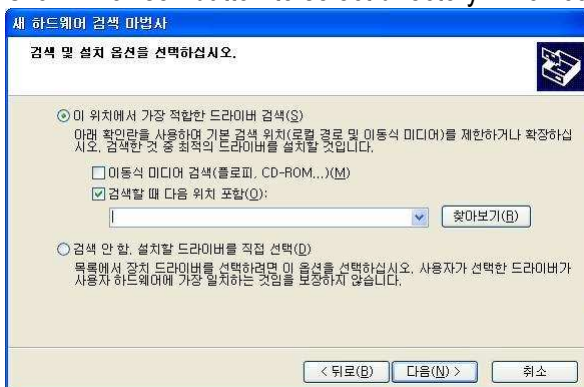
- You can see following dialog-box.
The second USB driver will be installed.
All sequence is the same to previous sequence.
Select the lowest item and Click “Next” button.



- Select the lowest item and Click “Next” button.



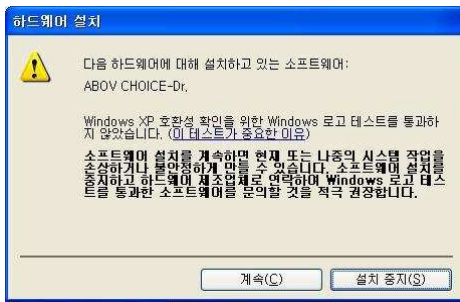
- Check and select as following dialog-box example.
Click “Browse” button to select directory which contains the INF file.



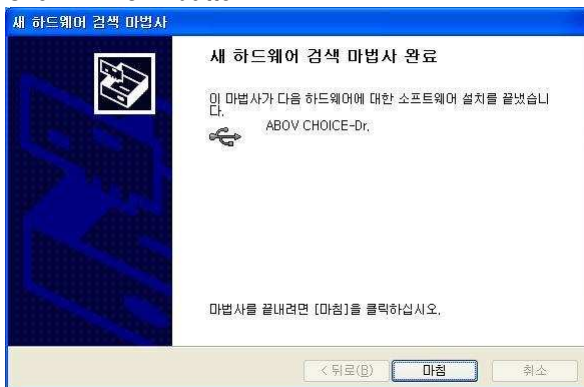
- Select the exact directory where you installed the debugger package.
Directory path is “c:\Program Files\ABOV Semiconductor\SetupUSB_Dr”
Click “Yes” button.



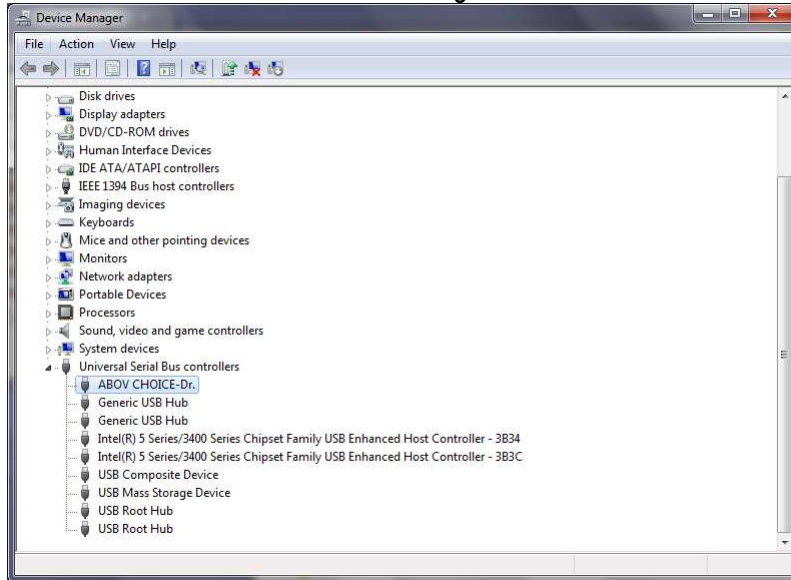
- Microsoft Windows asks whether you setup or not the driver software.
Click “Continue” button.



- Dialog-box shows the second USB installation was completed.
Click “Finish” button.



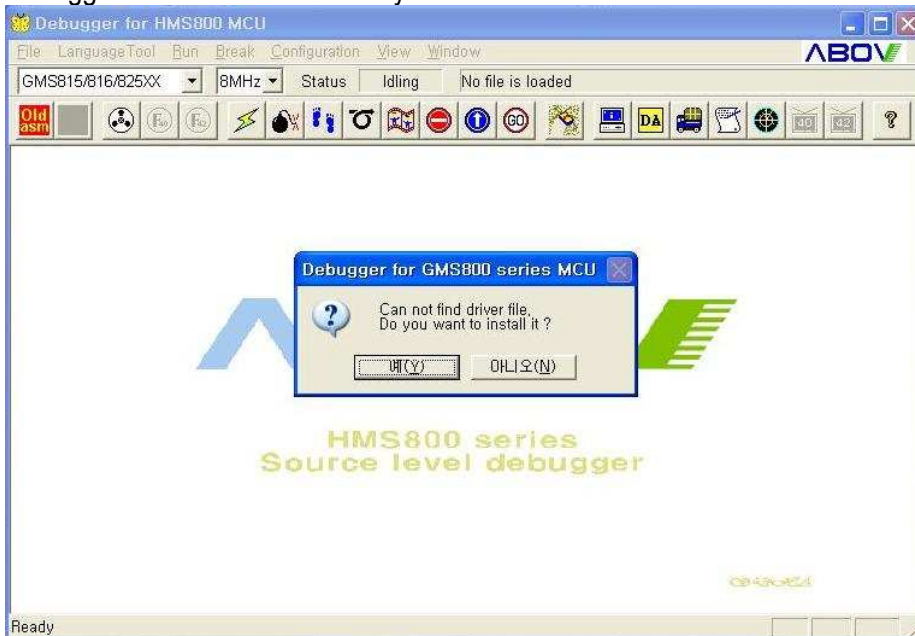
- USB drivers are installed.
You can see it from the “Device Manager”.



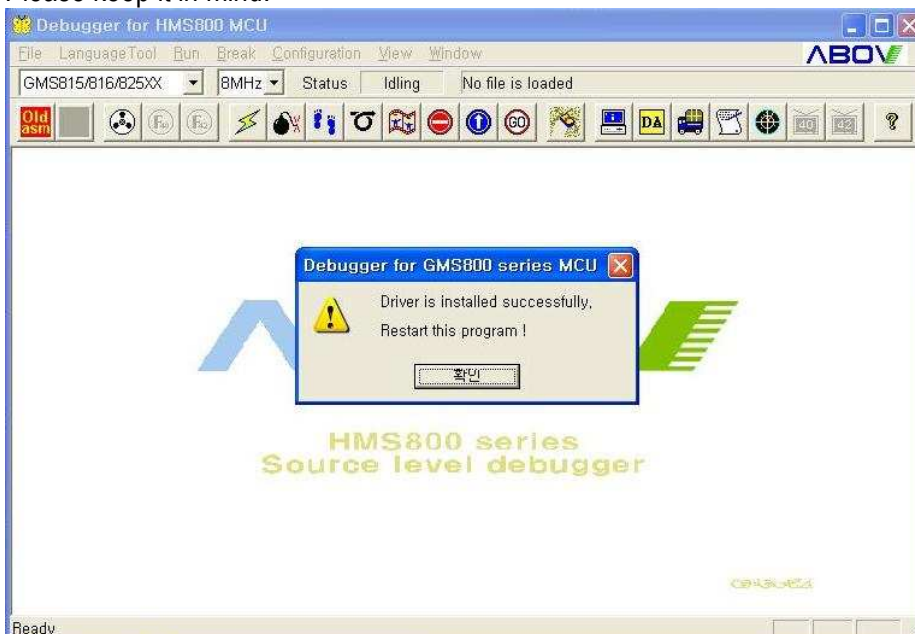
III. Install LPT driver

CHOICE-Dr. 32bit Debugger program use LPT communication driver and USB communication driver. When debugger program is executed first time after it was installed, debugger program detect and get the driver information.

- * Debugger find driver and asks to you to install it.



- * If it works successfully, it shows following message-box. If you do not run the debugger from the file browser then you will see an error message-box. Please keep it in mind.



- * Close debugger software.
- * All installations are completed. Thank you!