



CHOICE-Dr. install manual

for 64bit OS

V1.53

2011. December

Contents

I. Install debugger package	2
II. Install USB driver	9

I. Install debugger package

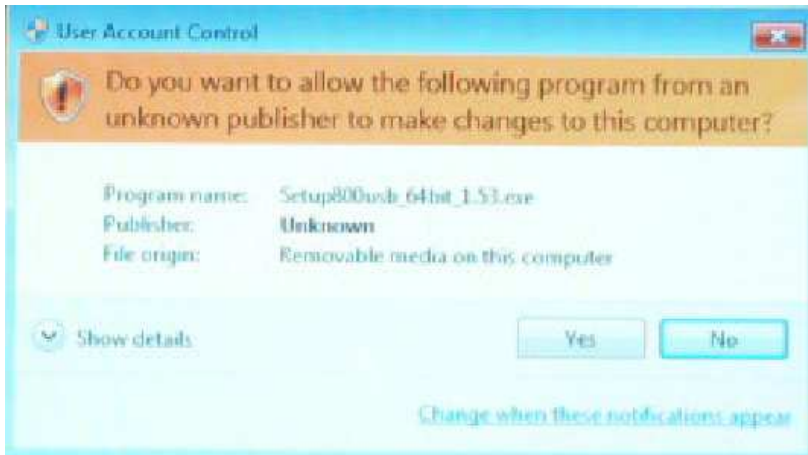
You have to setup application software first. Because of the device driver program is copied during application software installation.

Do not plug in the CHOICE-Dr. emulator hardware to your PC yet.

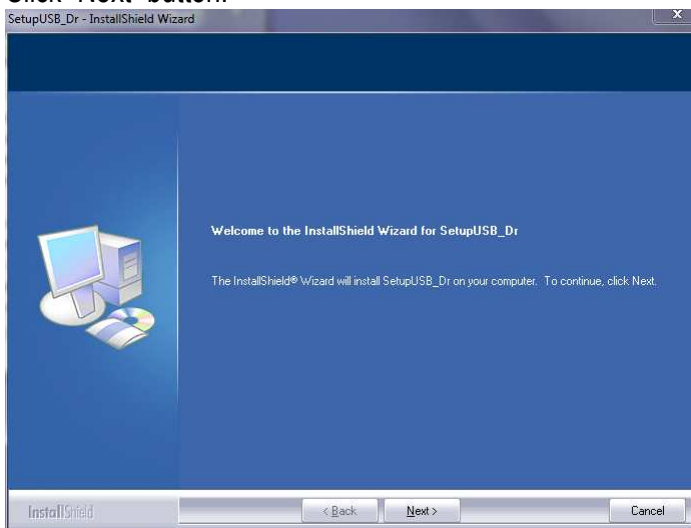
Please download executable single setup program from our website (<http://www.abov.co.kr/>). Following screen shot is captured from Microsoft Window7 (64bit) version.

You have to keep this installing sequence. 64bit version installation is slightly complex than 32bit version.

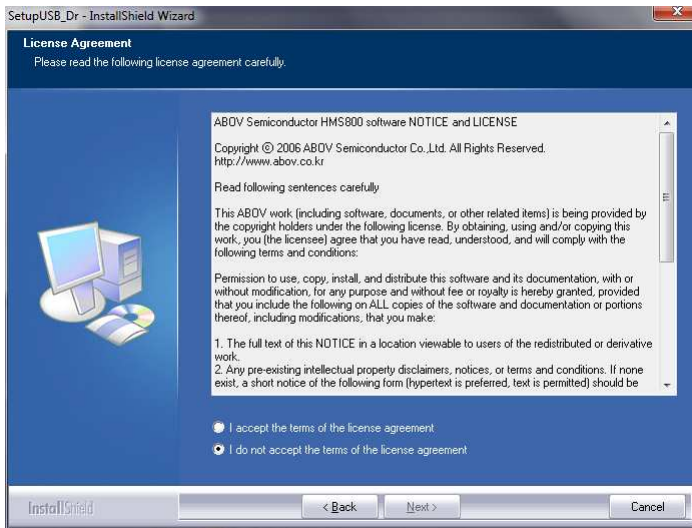
- You can see the following dialog box when you execute setup program. Click “Yes” button to install this software.



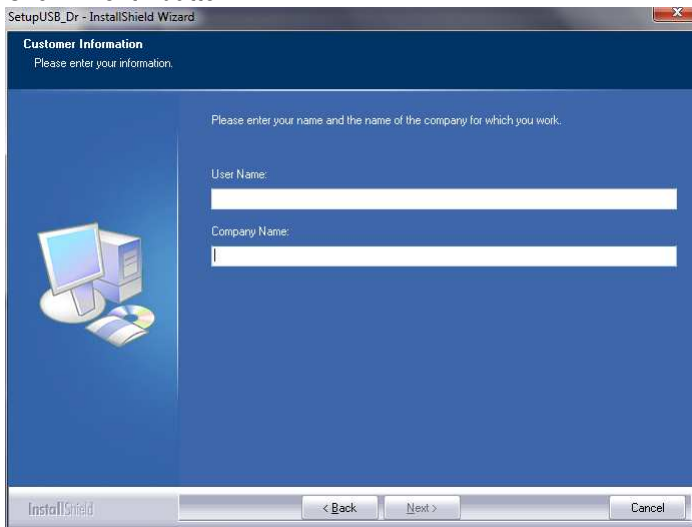
- If you execute debugger package setup program, you can see following dialog. Click “Next” button.



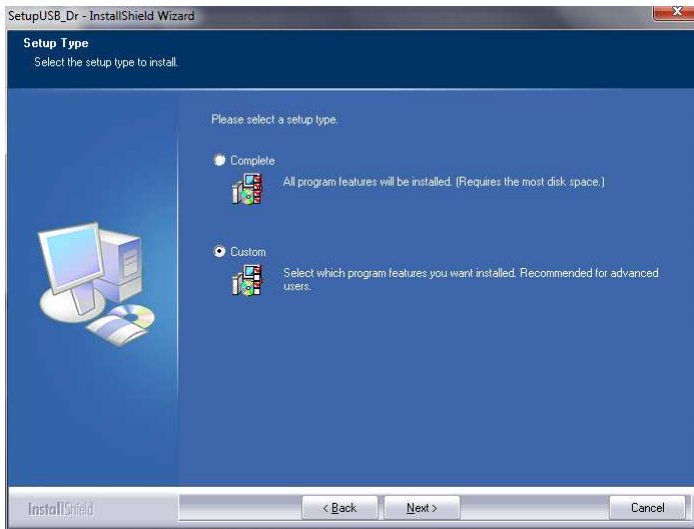
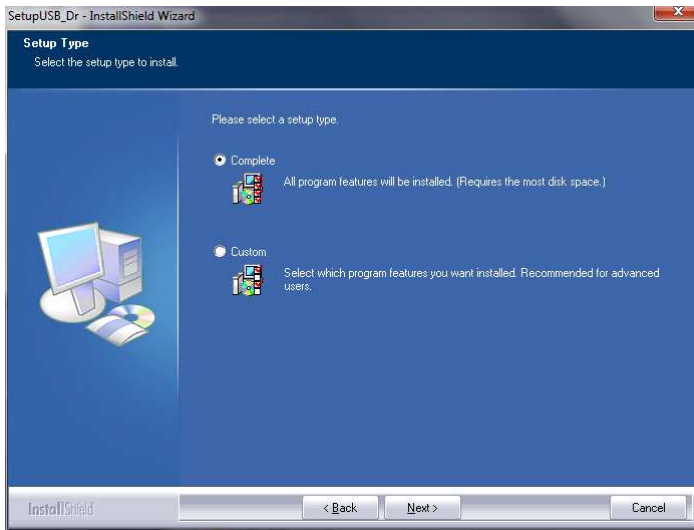
- Dialog-box asks license agreement.
 Select “I accept the terms of the license agreement”.
 Click “Next” button.



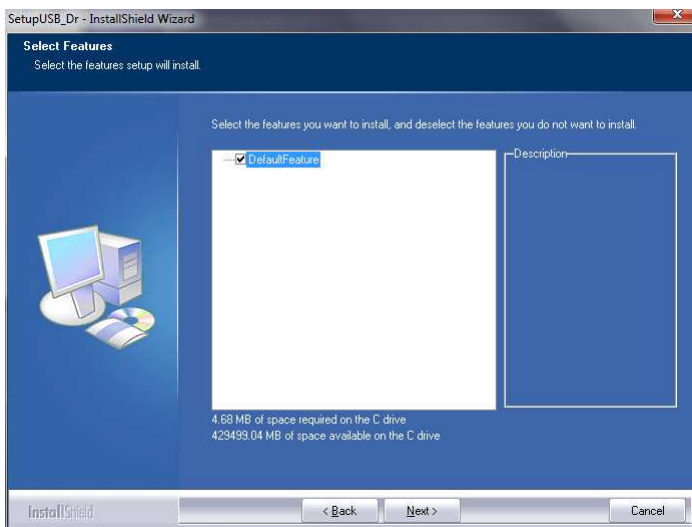
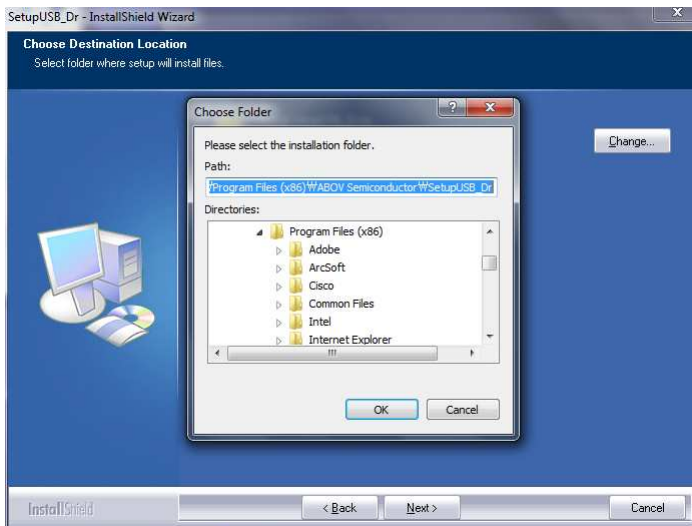
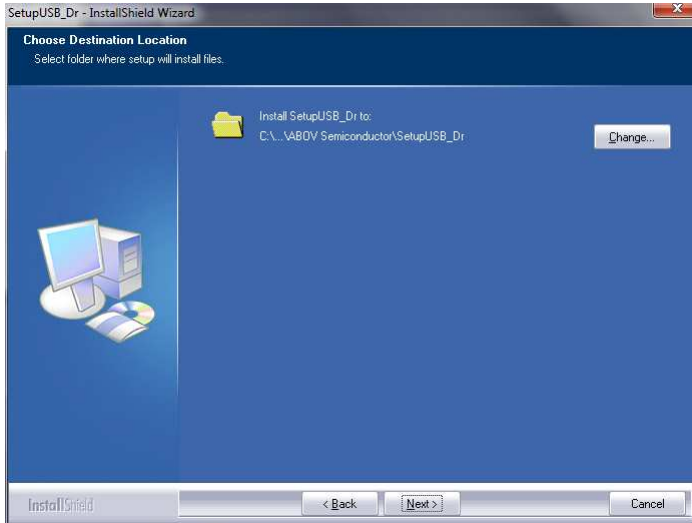
- Dialog-box asks User name and Company name.
 Fill the blank lines.
 Click “Next” button.



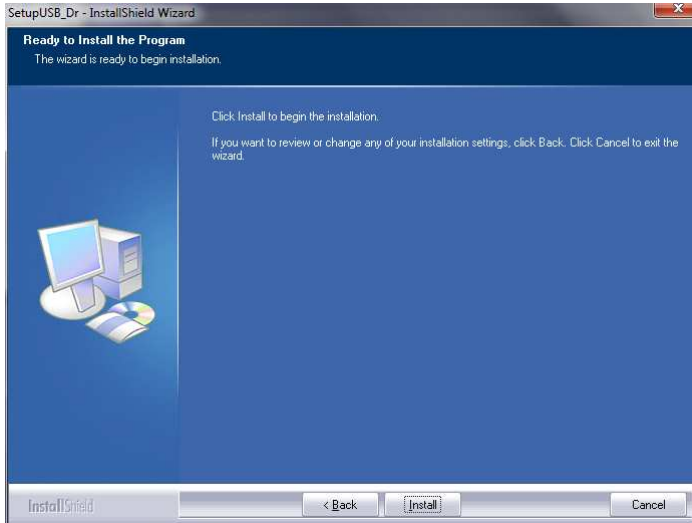
- Dialog-box asks install type.
If you want change target directory, select “Custom”
Or not, select “Complete”.
Click “Next” button.



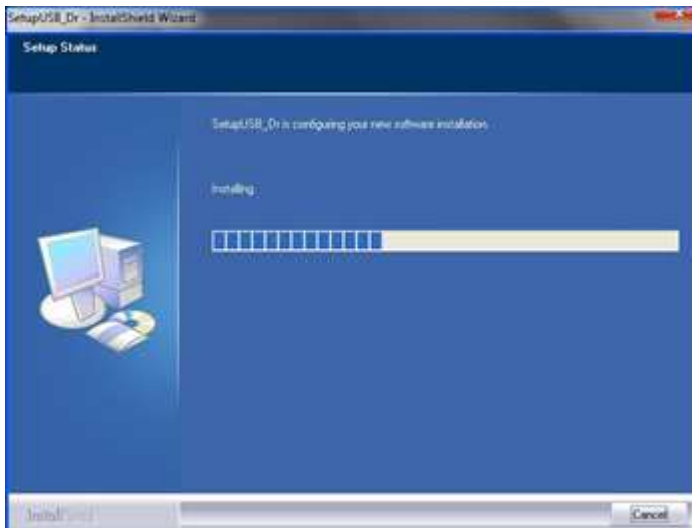
- If you selected Custom, you can change target directory here. Click “Install” button.



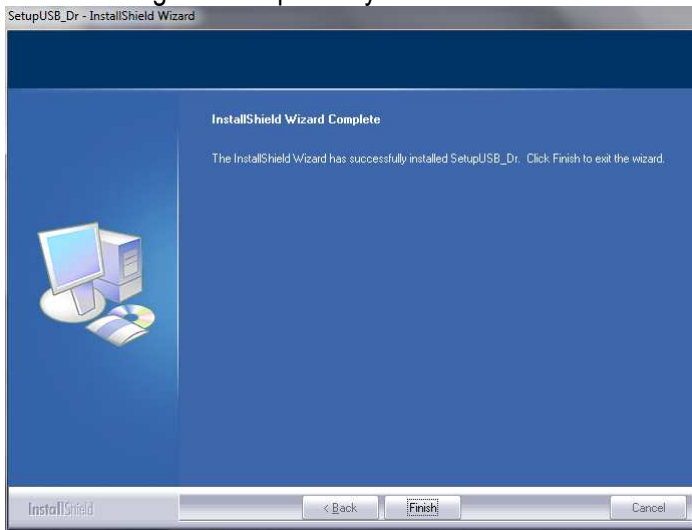
- Dialog-box notify the beginning of the installation.
Click “Install” button.



- Dialog-box display installation processing.
Click wait until it is finished.



- Dialog-box notify the installation is completed.
Click “Finish” button.
PC re-booting is not required by this installation.



- Software installation is finished.
But, you have to install USB driver too. Or not, CHOICE-Dr. emulator can not be work.

II. Install USB driver

CHOICE-Dr. emulator is using 2 driver programs.
It means, your PC recognize 2 times to install CHOICE-Dr. hardware

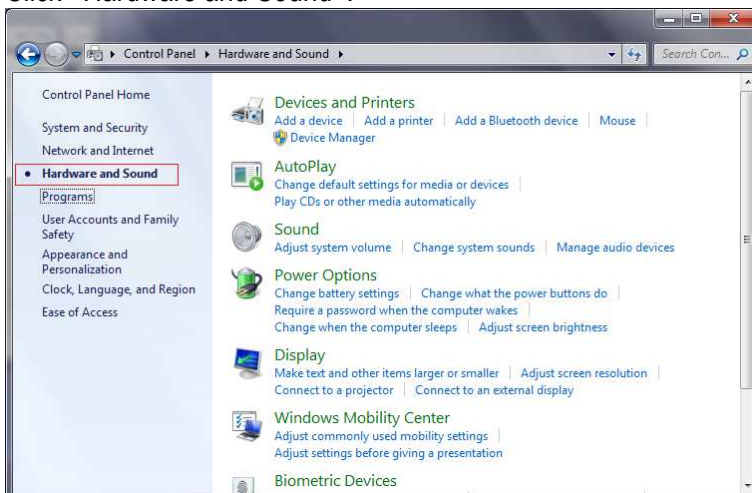
If you did not install the debugger package yet, please install the debugger package before this USB driver installing.

Two USB drivers will be installed.
Second USB driver will be installed as soon as the first USB driver is installed.

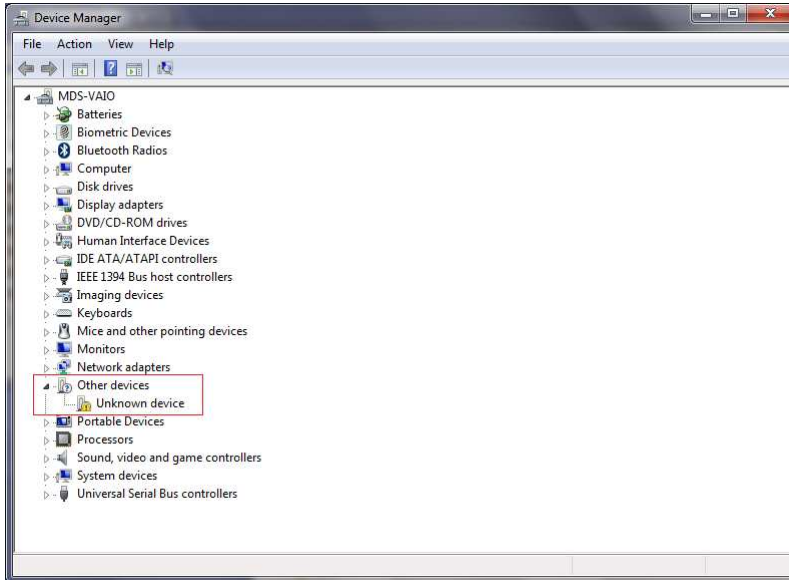
- Connect CHOICE-Dr. to your PC.
From now, you have to install drivers by manual.
- Open Control Panel.
Click “System and Security”



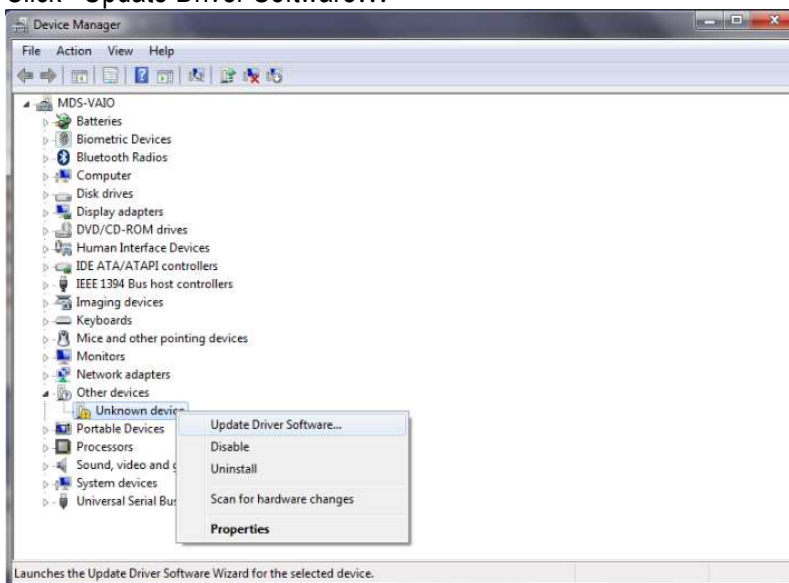
- Click “Hardware and Sound”.



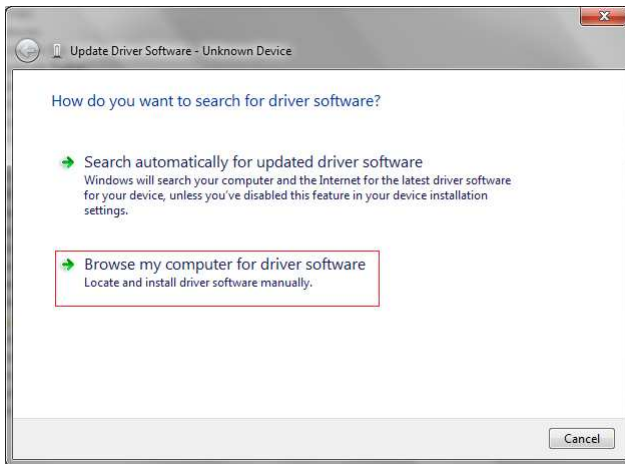
- Now, you can see your PC device manager.
And there is “Unknown device” item in “Other devices”



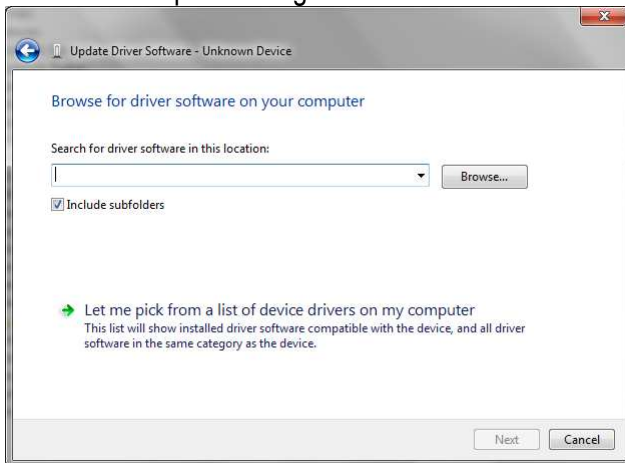
- Move your mouse cursor to the “Unknown device” and then click right button.
You can see sub-menu here.
Click “Update Driver Software...”



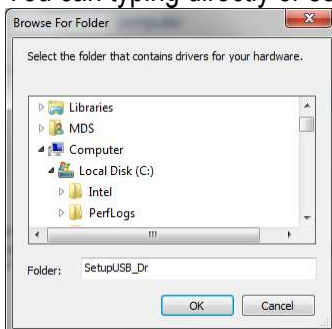
- Click “Browse my computer for driver software”.
Because of, driver program was copied during CHOICE-Dr. software installation to the target folder.



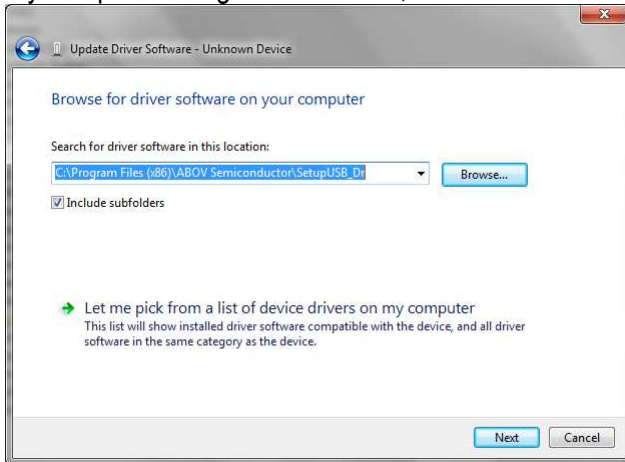
- You have to input the target folder name.



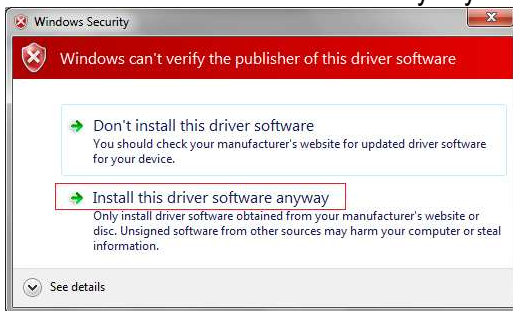
You can typing directly or select folder by using mouse.



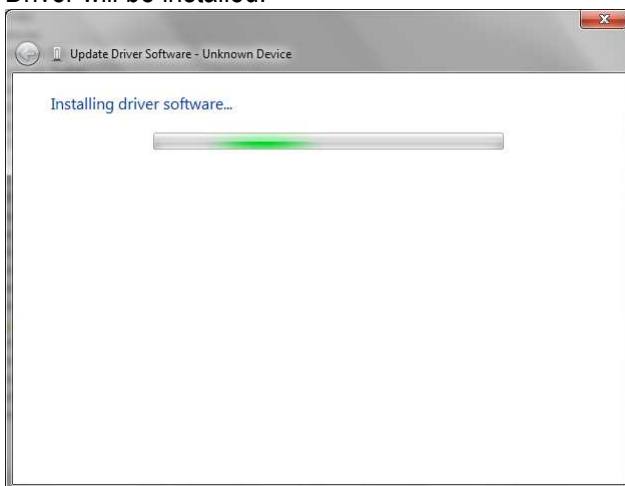
- If you input the target folder name, click “Next” button.



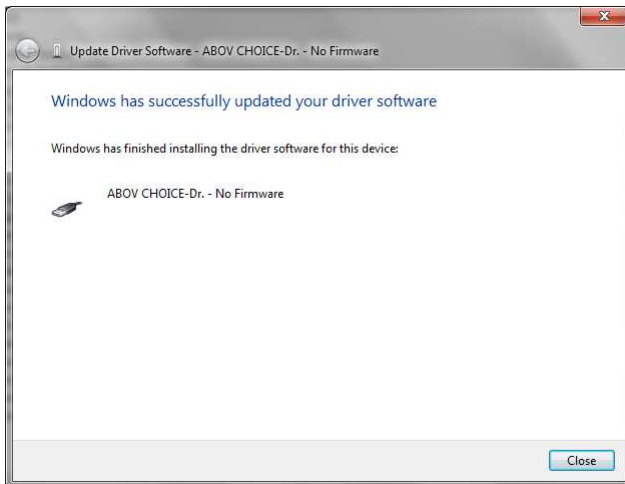
- MS-Windows warns unknown driver publisher. Click “Install this driver software anyway”.



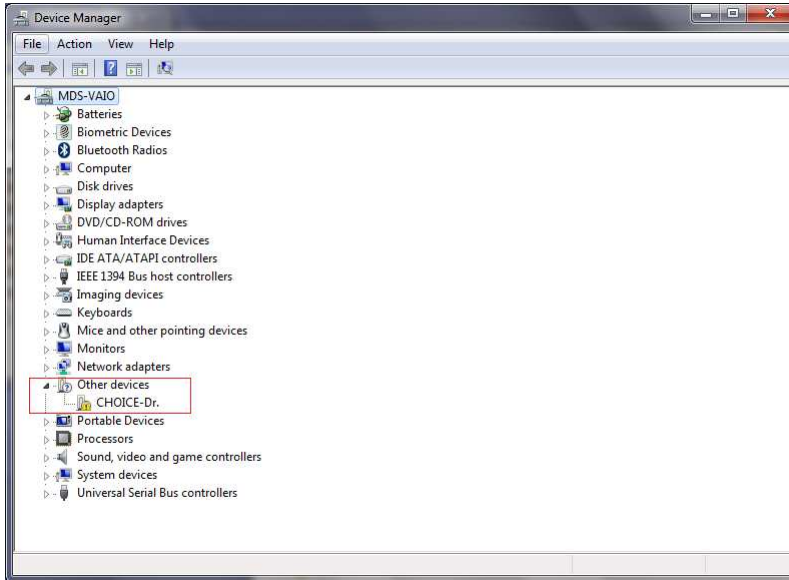
- Driver will be installed.



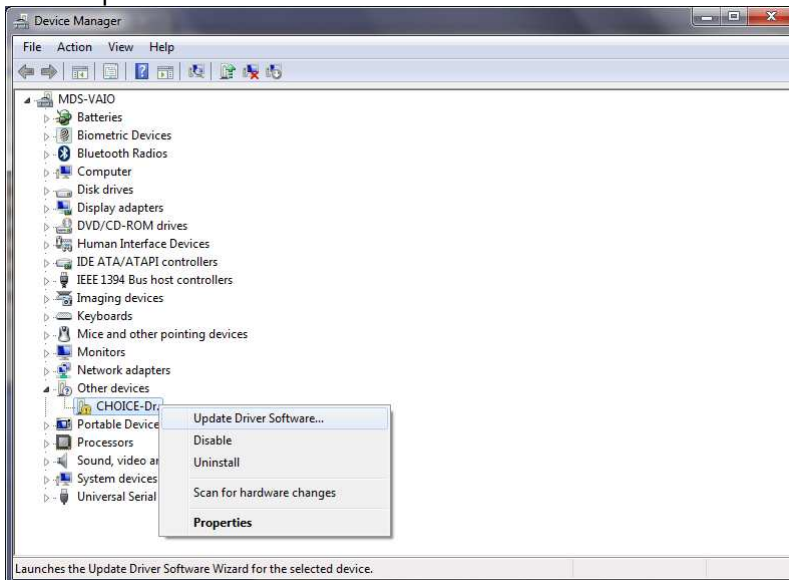
- Dialog-box shows the first USB driver installation was completed.
Click “Close” button



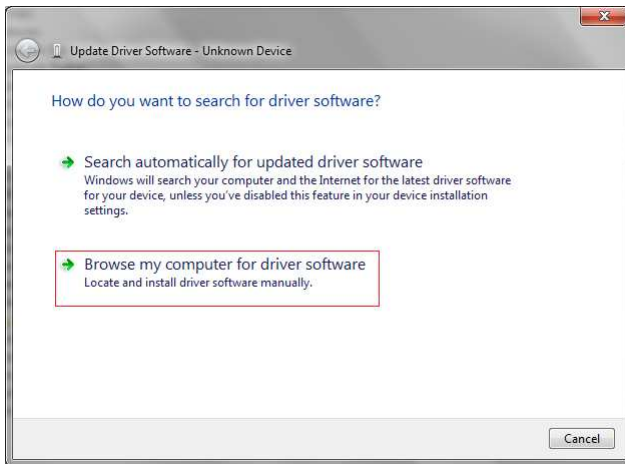
- See your PC device manager.
You can see “CHOICE-Dr.” item in “Other devices”



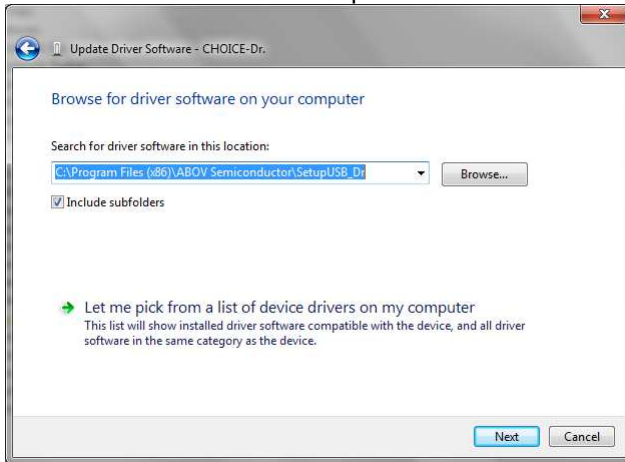
- Move your mouse cursor to the “CHOICE-Dr.” and then click right button.
You can see sub-menu here.
Click “Update Driver Software...”



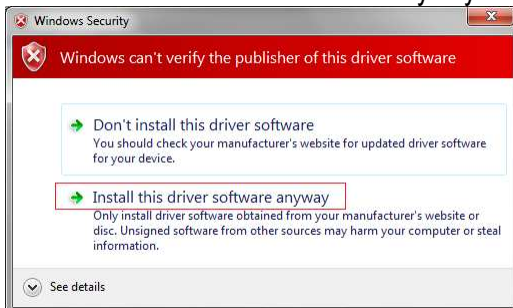
- Click “Browse my computer for driver software”.
Because of, driver program was copied during CHOICE-Dr. software installation to the target folder.



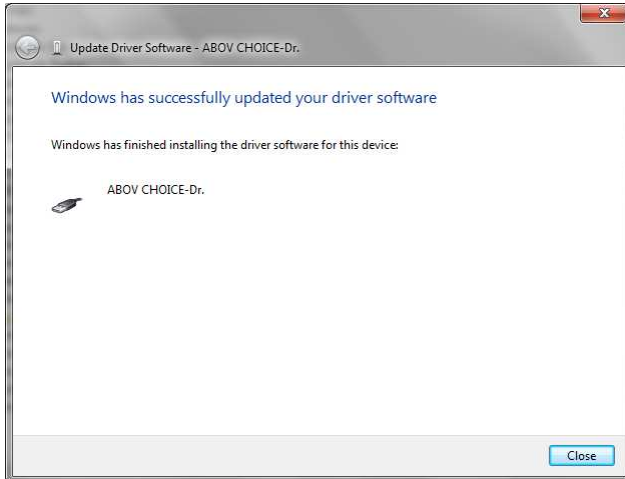
- You have to input the target folder name.
This is the same folder to the previous installed 1st USB driver.



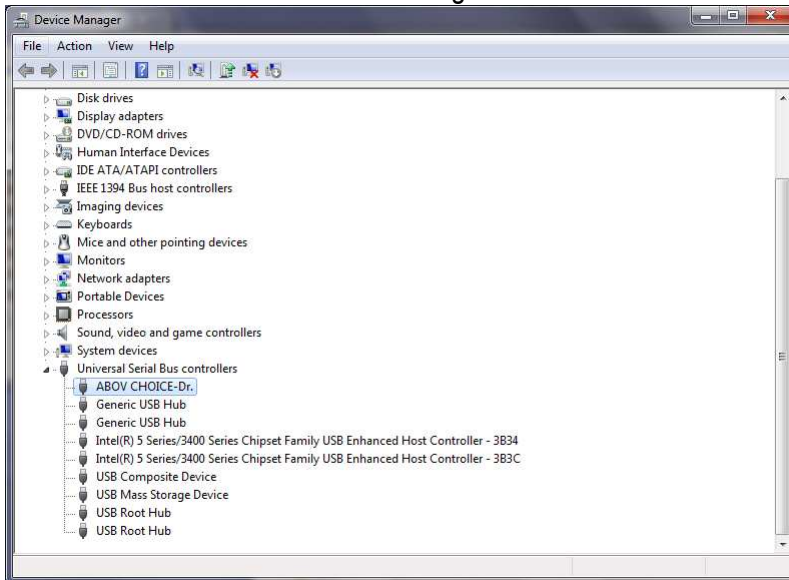
- MS-Windows warns unknown driver publisher too.
Click “Install this driver software anyway”.



- Dialog-box shows the second USB driver installation was completed. Click “Close” button



- All drivers are installed. You can see it from the “Device Manager”.



- Now, you can use CHOICE-Dr. emulator with your PC. Thank you very much.